

MATFR401 series

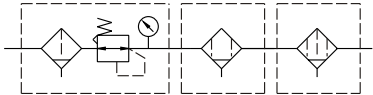
AIR UNITS (F.R.UNIT)



Specification:

Model	MATFR401		
Bore No.	8A	10A	15A
Port size	PT 1/4	PT 3/8	PT 1/2
Medium	Air		
Operating pressure range	0~15 kgf/cm ² (0~1.5 Mpa)		
Proof pressure	20 kgf/cm ² (2 Mpa)		
Regulation pressure range	Standard type: 1~8.5 kgf/cm ² (0.1~0.85 MPa) High pressure type: 1~15 kgf/cm ² (0.1~1.5 Mpa)		
Ambient temperature	-5~+60°C (No freezing)		
Filtration	5 μm+0.3 μm+0.01 μm		
Attachment	Pressure gauge		
Weight	2106 g		

Symbol:



※ Standard unit contains semi-auto-drain function when operating pressure below 0.5 kgf/cm²

Order example:

MATFR401 - 8A - [] - B - BSP

MODEL

BORE SIZE

8A: PT 1/4
10A: PT 3/8
15A: PT 1/2

Blank: Standard type
C: External pressure gauge
D: Auto drain valve
H: High pressure type

Blank: Standard type
B: C type bracket

PORT THREAD
Blank: PT thread
BSP: BSP thread
NPT: NPT thread

MATFR401

MATFR401-B

